

The Heavenly Herald

660 West Main Street P.O. Box 157 Cheshire, CT 06410

(203) 272-5106 Fax (203) 272-3523

On the Web at <http://www.cheshirelutheran.org>

Email us at: office@cheshirelutheran.org



PASTOR'S MESSAGE

Who knows what the future holds? No one does. What we do know is that we have the opportunity to share with others our stewardship of life as we handle the various changes in life that come our way. Resolutions made for the New Year act as plans for us. They become blueprints of what it is we would hope the future to be. Some of those blueprints are realistic while others are not. Some of them are easy to fulfill while others may call us to stretch beyond our comfortable limits in order for them to come to pass. Usually they are made so that there is a sense of improvement for our lives, and sometimes they are made just for the sake of change.

In this New Year I would challenge you to consider the fact that all experiences of life are actually tests of our stewardship as God's children. What I mean by that is that we are to face each day's events as children of God and handle them as his faithful and faith-filled children. As God's children means that we understand and believe we do not face life's situations alone. Rather, we face each day with God to guide us and to help us. We face the challenges that may be tough and difficult to handle as well as those that are more pleasant and perhaps easier to tackle with the Lord by our side. It means that even our best laid plans and all of our resolutions have a given expectation that the Lord will help us to see them through.

I believe that by holding to such a perspective we would approach the New Year with more optimism than pessimism, and with more hope than concern. We might not be so frightened of the future as something that is unknown but comfortable with the reality that the future has in store the many blessings God would want us to know, and that when we are met by unexpected crosses the Lord will help us to bear them. The New Year would be something to look forward to with opportunities to serve our Lord and many moments in which we can witness to our faith.

We have just celebrated the day of Christmas remembering the reality that God is with us, that he came into our time and our experience as a human being. Every year the Church goes through a cycle that helps us to remember why God came to be with us, we recall that he accomplished what was impossible for us to do, for us. This reality is recycled every year so that we can be affirmed of the reality that God will be with us as we face the realities, both good and bad, of the future.

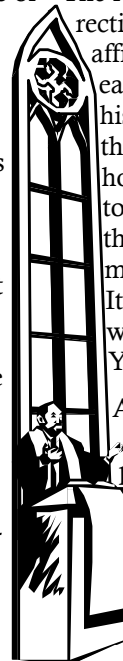
The reality of Christ's life, death and resurrection help us to face the future because it affirms the truth God is with us. We live each day under his grace and affirmed by his love for us. If we hold to such a belief then it does not matter what the future holds, what matters is how we are going to meet it. The truth that will sustain us through all things of this New Year is: we meet the future with the Lord by our side. It is how we get through the day and how we are blessed for the future and the New Year.

A hymn from the old Lutheran Hymnal reminds us, "With grateful hearts the past we own; the future, all to us unknown, We to thy guardian care commit, And peaceful, leave before thy feet."

In scenes exalted or depressed, be Thou our Joy and Thou our Rest. Thy goodness all our hope shall raise, adored through all our changing days."

May you greet the New Year with certainty and with hope knowing that the Lord of life is with you always.

Pastor Gustafson



INSIDE THIS ISSUE:

Presidents Message	2
Financial Secretary Needs YOU	2
Pledge Packets for 2014	2
CLC Calendar	3
Worship Servants for January	4
DCE	5
Oh Christmas Tree	5
All Choirs Schedule	6
Helping Hands	6
Our Sincere Appreciation	7
Feeding Children Everywhere	7
UPDATE	
News From Our Little Cherubs	8
This Month in Our History	8
News From Our Stewardship Deacon	8
On the Bulletin Board	9
Souper Bowl	9
CLC First Sunday Food Trend	10
Greeting Card Fundraiser	10
Thursday Afternoon Ladies	11
CLC Women's Retreat	11
CLC All Choir News	11
CLC Commemorative Items For Sale	11
December 2013 Memories	12-13
Support Hope Pregnancy Center	14
Adult Information Classes to begin soon	14
Remember Our Cherished Congregants	14
Sunday School for January	15
CLC Calendars for 2014	15
Bible Studies at CLC	16
Help Wanted—Archivist	16
Worship and Weather	17
Sunday Worship Assistance	17
Sunday School Teachers Needed	17
January Birthdays	18
January Anniversaries	18
Council & Voters Meeting Reminder	18

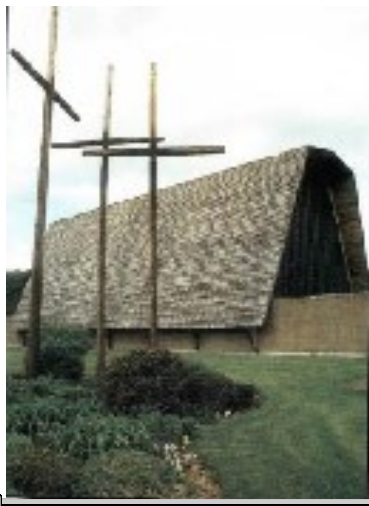


COME WORSHIP WITH US

Sunday Worship Services:
8:00 am & 10:30 am
(Nursery Care Available - 10:30 am)

Sunday School & Adult Bible Classes:
9:10 am

Summer Worship Service:
9:00 am
(Fathers Day to Labor Day)



The Heavenly Herald is published for members and friends of Cheshire Lutheran Church.

*Church Staff
Rev. Charles Gustafson-Pastor*

Carol Santoro-Office Manager

Martha Medford-Organist & Choir Director

Andrew Schaefer - Director of Christian Education

Bill Sherman-Parish President

Beth Soulier-Editor

NEWS FROM THE PRESIDENT

AND THE CHURCH COUNCIL



Our CLC governance documents have officially been amended. At two Special meetings held in December, our Voters Assembly adopted the proposed amendments to our Constitution and Bylaws. Copies of these newly amended documents should be available mid- January. Thanks to the members of our Constitution and Bylaws committee who worked so diligently over the past several months to bring this to fruition. We pray that these documents will guide our worship, the spreading of God’s Word and our stewardship of His gifts for many years.

As we begin 2014 with the installation of our officers and deacons for their new terms, I’d like to extend a “Thank you” to the officers and deacons who have completed terms of faithful service on our Church Council: Craig Wilson as Vice-president, Martha Henderson as Education deacon, Alan Spose as Fellowship deacon, Pat DiDomizio as Stewardship deacon and James Donewald as Youth deacon.

I’d like to extend a “Thank you” to the officers and deacons who have completed terms of faithful service on our Church Council

As some of us may be pondering ‘new year resolutions’, I’d like to encourage you to resolve to become and stay engaged in some of our many ministries at CLC. And, as the Spirit moves you, bring along a friend!

Happy New Year; see you in church!

Bill

William C. Sherman
Parish President, CLC

FINANCIAL SECRETARY COMMITTEE NEEDS YOU...

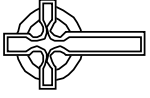


The Financial Secretary is always in need of volunteers to aid in counting church offerings after the 10:30 AM Sunday services. If you are available 4 - 6 times per year for approximately one hour, please contact Bill Soulier!

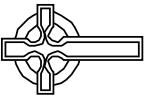
PLEDGE PACKETS FOR 2014...



Please assist CLC in planning and meeting our financial obligations by returning your pledge card to the church as soon as possible. Thank you!



THE GALILENDAR



January

January Servants

January 2014

Senior High Youth Group:

Happy New Year! Welcome to 2014! This month we will be doing things a little different. I have received numerous questions about whether or not we can meet every Sunday instead of every other, so we will go ahead and give it a shot, with the exception of the first Sunday. I look forward to our times together this month and I hope that you do as well! Again, happy New Year and I'll see you guys on Sunday!

Important Dates for the Senior High Youth:

- ✠ **January 12th:** Youth Group @ 7pm to 8:30pm
- ✠ **January 19th:** Youth Group @ 7pm to 8:30pm
- ✠ **January 26th:** Youth Group @ 7pm to 8:30pm

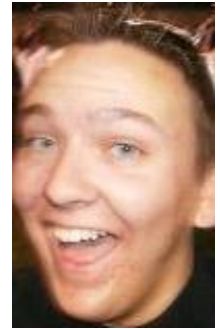
Junior High Youth Group:

Happy New Year! Welcome to 2014! This month we will be getting together a couple of times in anticipation for February's big retreat. If you are planning on going on the retreat please bring me your medical consent form as well as the \$75 registration fee, no later than January 8th. I'm excited for the new year and I look forward to see you all on Wednesdays!

Important Dates for the Junior High Youth

- ✠ **January 8th:** Deadline for New England Winter Extravaganza retreat (Feb 21-23)
- ✠ **January 15th:** JR High Youth Group @ 7:10pm to 8:30pm
- ✠ **January 29th:** JR High Youth Group @ 7:10pm to 8:30pm

**D
C
E**



OH CHRISTMAS TREE...OH CHRISTMAS TREE!...

As Vice President of CLC, one of the responsibilities is to secure the Christmas tree for the holidays. I wanted to take a moment to thank Vicki DePaolo for her generous gift of the tree that we were blessed with for 2013. The tree was magnificent even without decorations, but with decorations was spectacular! I also want to thank Ed Schweizer and his team of lumberjacks for the sawing, hauling, hoisting and clean-up. The team was great and the work was safe!

And finally as securing the Christmas tree was my last official act of duty as Vice President, I want to thank each and everyone of you, CLC members, for the honor and privilege of serving you as President and Vice President over the past six years. I appreciate the support and counsel you provided for me and am thankful to be a part of this great church! Happy New Year to you and to those you love!

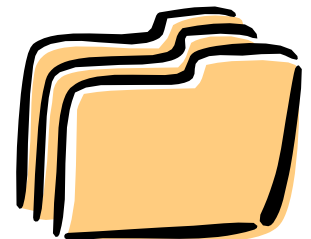


Sincerely,

Craig D. Wilson

NEED TO GET INFORMATION TO CERTAIN MEMBERS OF OUR CONGREGATION?

Just slip your information or a note into one of the folders on the hallway table outside the church office. Folders have been created for each of the council members, Beth Soulier (the editor of this newsletter) and a few others and placed outside the office. We have found that this is a great way to distribute information within the congregation.



CLC ALL CHOIRS REHEARSAL & PERFORMANCE SCHEDULE...

Date	Time	Event	Choir
January 8- Wednesday	6:30 PM	Rehearsal	Youth Choir
	7:15 PM	Rehearsal	Bell Choir
	8:00 PM	Rehearsal	Parish Choir
January 12 - Sunday	10:10 AM	Rehearsal	Youth Choir
	10:30 AM	Performance	Youth Choir
January 15 - Wednesday	6:30 PM	Rehearsal	Youth Choir
	7:15 PM	Rehearsal	Bell Choir
	8:00 PM	Rehearsal	Parish Choir
January 19- Sunday	10:10 AM	Rehearsal	Parish Choir
	10:30 AM	Performance	Parish Choir
January 22 - Wednesday	6:00 PM	Rehearsal	Parish Choir
	6:30 PM	Rehearsal	Youth Choir
	7:00 PM	Performance	Youth & Parish Choirs
	9:40 PM	Rehearsal	Bell Choir
	10:30 PM	Performance	Bell & Parish Choirs
January 26- Sunday	8:00 AM	Performance	Youth Choir
	10:30 AM	Performance	Youth Choir
January 29 - Wednesday	6:30 PM	Rehearsal	Youth Choir
	7:15 PM	Rehearsal	Bell Choir
	8:00 PM	Rehearsal	Parish Choir

CLC HELPING HANDS...



If you are in need of help please call on our Helping Hands committee. Please call Christine Smith (203) 250-7323 and she will arrange for meals to be made and delivered to you by our committee. You can also email her at christinels@hotmail.com

Whether this need is the result of a hospital stay, a new baby arrival, or a recent loss of a loved one, we want to support you during your critical time.

If you would like to volunteer as a member of the helping hands committee by making a meal for someone who is in need, please call Christine Smith so that we may call upon you when the need for your assistance arises.

Therefore, as we have opportunity, let us do good to all people, especially to those who belong to the family of believers. -- Galatians 6:10

Our Sincere Appreciation

- ✚ Many thanks to the “Thursday Afternoon Ladies” for assembling the huge December Heavenly Herald! HUGS!
- ✚ Many thanks to Jonathan Manke for donating the lovely red Poinsettias that adorned our Altar on Christmas Eve. They were beautiful!
- ✚ **Church Decorating – Thank You!**
Thanks to all the folks that helped out with setting up the Christmas tree, decorating it, and decorating the church. The chosen tree is just beautiful!
- ✚ VERY SPECIAL Thank you to Tim Weiland for ALWAYS being there to take pictures of all of our events! Tim, your hard work and dedication is GREATLY APPRECIATED!
- ✚ Gracious thanks to Curt and Karen Smith for donating the beautiful wreaths that adorn the Church!
- ✚ Special Thanks to Bill and Debbie Sherman for donating the lovely white Poinsettia plants that are placed beneath Chrismon Tree in the Sanctuary.
- ✚ Of course Thank You to Don and Vicki DePaolo for choosing and donating the beautiful tree!
- ✚ Very special Thank You to Martha and her crew for the lovely Christmas Pageant. Your hard work paid off, the Pageant was phenomenal.



FEEDING CHILDREN EVERYWHERE UPDATE...

19 members of CLC participated in the NED Hunger Project held at Immanuel Lutheran Church on Saturday December 7th. Our Thanksgiving offering of \$903 purchased 3,612 meals that we packed at this event. Thanks to all who volunteered for this event, Andy for help with the *Feeding Children Everywhere* video shown at the Thanksgiving service and all who contributed to our Thanksgiving offering.



NEWS FROM OUR LITTLE CHERUBS...

Happy New Year! To A Blessed Year! I am loving writing this message to you. I feel so bonded to all of you in a very special way. I have a very special wish for you at this time of year.



Sunshine in your heart, no matter what the weather is outdoors
The gift of friends and family surrounding you this holiday season
Safety and ease and fun in your travels, either in or out of town
The joy of the miracles from this season awakening something special within you
The love of this holiday season, entering all aspects of your life and those you love
Good food, fun, laughter, cheer and God's blessings in your life and in the lives of all those you love.

The way I feel is how I feel for the Children of Little Cherubs Christian Preschool. They know they are loved from the Holy Spirit along with their teachers, friends, family and everyone else I left out.

In January we will be teaching about The Shepherds, The 3 Kings, Martin Luther King Jr., Jesus Grows as a Child, John The Baptist

God Bless,

JOANN and Todd



THIS MONTH IN OUR HISTORY!...

A monthly glimpse of the history of your Cheshire Lutheran Church:

January 3, 1521	Martin Luther excommunicated from Catholic Church by Pope Leo X
January 1958	First congregational officers elected, parish constitution adopted, and congregation officially named Cheshire Evangelical Lutheran Church
January 29, 1961	Opening dedication ceremony of Cheshire Evangelical Lutheran Church



NEWS FROM OUR STEWARDSHIP DEACON...

Dave Veleber has consented to fill the Stewardship Deacon position previously held by Pat DiDomizio. Pat held the position for over 6 years while we prayerfully waited for a replacement. Pat wanted us all to know how proud he is to have had the opportunity to serve CLC, and how grateful he is to all for their service, generosity, and support of CLC.

We all would like to extend our thanks to Pat for his hard work and dedication over the past years and especially for remaining in the position longer then expected. We also wish to welcome Dave into this position. We are Blessed!!!!

ON THE BULLETIN BOARD:

Remember to check the Bulletin Boards and/or hallway table for sign-up sheets and information about various events!

This month on the Bulletin Board:

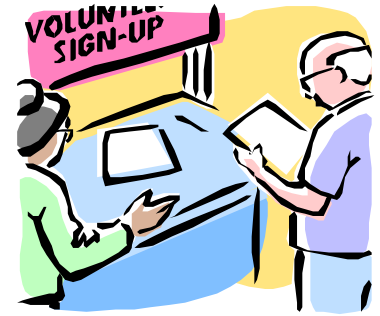
- † CLC Little Blessings Nursery Needs Volunteers
- † Hope Center 2014 volunteer sign-ups
- † Between Service Coffee hour sign-up
- † Good News Garage information
- † Community News and Happenings
- † 2014 Flower Chart - If you would like to place flowers on the Altar
- † First Sunday Food Drive - Needs volunteers to deliver food

Others looking for help!

- † **Helping Hands** - Contact Christine Smith if you would like to be a member of the helping hands committee.
- † **All Choirs** Wednesday Evening Rehearsals are as follows:
 - 6:30 PM – Youth Choir
 - 7:15 PM – Adult Bell Choir
 - 8:00 PM – Parish Choir

Each choir is praying for new members. Please consider joining, you will be happy you did!

- † **Sunday Morning Coffee Hour Fellowship:** Looking for members to help out with this wonderful fellowship. Contact the office!



NEWS FROM OUR SOCIAL WELFARE DEACON...

First, let me wish all of you a happy and healthy New Year.

Highlights of the focus of our ministry during the first few months of 2014:

- ✦ We will continue to support our **local** organization “*Hope for Life*”, d.b.a. Hope Pregnancy Center. They are located at 110 main Street, Cheshire in a facility provided by Christ Community Church. They will gratefully accept infant clothing and used nursery equipment. For further information, see the poster hung above the bassinet in the hallway.
- ✦ Please sign up to count and bring the food to the Cheshire Food Pantry. Sign up sheet is located on the bulletin board.
- ✦ The Social Welfare Committee in conjunction with our Youth will participate in the Souper Bowl of Caring. Take the Football Challenge on *Souper Bowl Sunday*. Bring a dollar and a can of soup on Sunday February 2, 2014, (Super Bowl Sunday). Our Youth will collect your dollar donations in soup pots as you exit church and there will be buckets in the narthex to deposit your soup. All soup and cash donations will be donated to the Cheshire Community Food Pantry. These donations will be included in our First Sunday Food Bank counts.



Thank you all for your continued support of our outreach ministries.

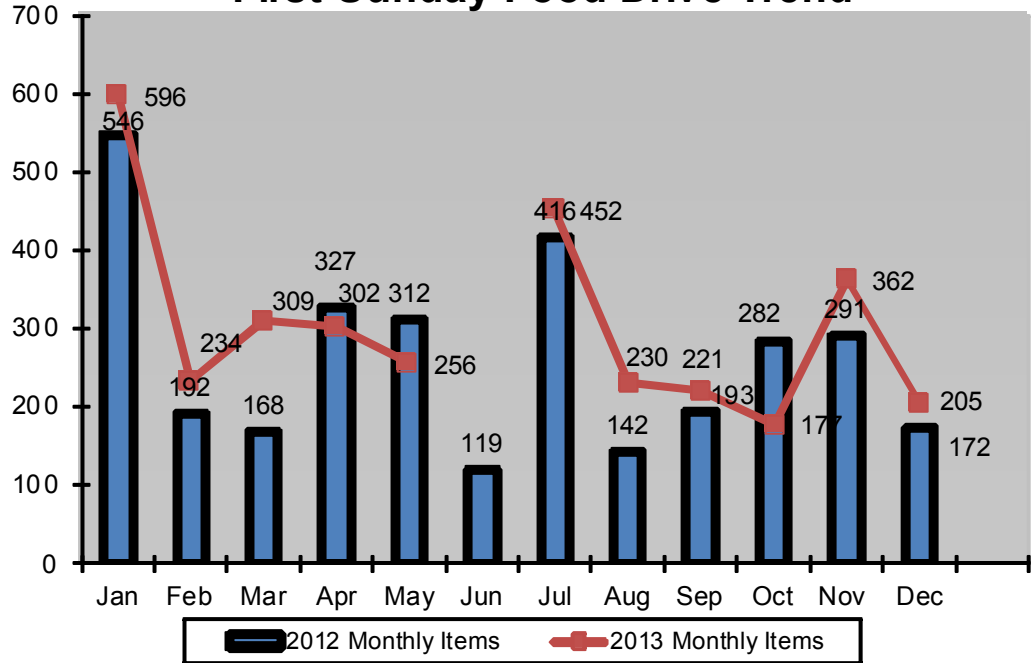
Vicki DePaolo
Social Welfare Deacon



DONATE YOUR FREEBIES!

If you happen to spot an item at the grocery store selling at a special price “buy one-get one free”, purchase it and donate the free item to First Sunday Food Drive

First Sunday Food Drive Trend



“Jesus said to him, ‘Feed my lambs.’” John 21:15b

LET'S NOT FORGET THOSE LESS FORTUNATE...

Don't let our First Sunday Food Bank donations fall behind last year's totals. We are in need of volunteers for 2013. Please note that the Cheshire Community Food Pantry is open Mon., Wed., Fri. from 9:00 am until noon and Tues. & Thurs. from 3:00 pm until 6:00 pm. The sign-up sheet is posted on the bulletin board in the hallway.

Please check expiration dates. We want to insure the food we are sending is not out of date. Any and all contributions are gratefully accepted, including non-food items such as soap, tooth paste, shampoo, detergent, paper products etc.

GREETING CARD FUNDRAISER!

(A project of the Thursday Ladies Group)



New cards continue to be added to the display case. All cards sell for \$1.00 and monies can be left in the yellow box attached to the rack.

Rita Stark and the Thursday Ladies presented a \$200 check(proceeds from card sales) to the Southbury Lutheran Home. The ladies thank the congregation for their generous support and hope to continue their record of giving to various church ministries.

We thank all for their support and especially thank those who leave large bills in the box.

Contact Persons; Rita Stark (272-3488) and Carolyn Bammann (272-7083).

THURSDAY AFTERNOON LADIES...

Attention Ladies!

Come join the “Young at Heart Group” of women who get together the last Thursday of every month at CLC, except when a special need arises like assembling the HH Newsletter! We are a “no frills” group whose mission is fellowship and service to each other and the church.

Our gatherings are alive with timely discussion and happy reflections on the members’ varied and interesting backgrounds. We also put together the newsletter and sponsor the on going greeting card fund raising project.

Refreshments served (provided by members), Lunch out occasionally!

COME, JOIN US, GET INVOLVED!



CLCW WOMEN’S RETREAT 2014...

The Cheshire Lutheran Church Women will hold their annual retreat at the **Guest House Retreat and Conference center** in Chester, CT on Saturday *June 7th*. We all thoroughly enjoyed this new facility last year and are anxious to go back. Look for details in future issues of the Heavenly Herald, notices posted on the bulletin board and in the Sunday bulletins. If you have any questions, please contact Vicki DePaolo at 203-697-01810.

Contact Vicki DePaolo for questions



CLC CHOIR NEWS...

All Choirs Wednesday Evening Rehearsals are as follows:

- 6:30 PM – Youth Choir
- 7:15 PM – Adult Bell Choir
- 8:00 PM – Parish Choir

Each choir is praying for new members. Please consider joining, you will be happy you did!



CLC COMMEMORATIVE ITEMS FOR SALE...

All proceeds from the mugs, note cards and Christmas Ornaments will benefit CLC’s building fund; lithograph sales benefit CLC Women. Items will be sold after each Service or by calling Karen Bailey (596-7240) or stopping by the Church office. Prices are as follows:

- Mugs—\$5.00 each.
- Note Cards—\$15.00
- Christmas Ornaments—\$5.00



December 2013



Christmas Tree and Church Decorating, December 21, 2013



Our Crèche 2013



Memories



CLC Annual Christmas Cookie Exchange December 3, 2013

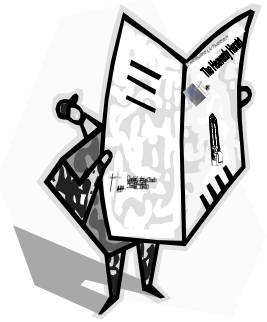


Christmas Pageant December 22, 2013



Christmas Eve Service December 24, 2013





PLEASE CONTRIBUTE TO MAKING THIS NEWSLETTER A SUCCESS!! (February 2014 Articles are Due!)

Please electronically submit ALL articles and information to Beth Soulier (soulierbeth@sbcglobal.net) by **January 24th** or earlier! Place all non-electronic articles and information you would like printed into the HH in Beth's lateral file folder on the hallway table.

Thank You!



HOPE PREGNANCY CENTER...

Volunteers to deliver baby items to Hope Pregnancy Center, located next to the Library in Cheshire, are needed. If you would like to help once or twice a year, please sign up on the bulletin board.



HOPE
Pregnancy Center

We have re-directed the donated baby items which are collected in the bassinet outside the church office. For years we have been donating them to "Baskets of Love" where women of the Waterbury Church of Christ used them to make baskets which are distributed to new mothers in Waterbury Hospital, Bristol Hospital and New Beginnings in Waterbury. We would like to now donate these items to the **local** organization "Hope for Life", d.b.a. Hope Pregnancy Center. They are located at 110 Main Street, Cheshire in a facility provided by Christ Community Church. They will gratefully accept infant clothing and unused nursery equipment. For further information, see the poster hung above the bassinet.

ADULT INFORMATION CLASSES HAVE BEGUN ...

Adult Information Classes have begun. They are for all who would like to learn about the Christian faith as seen through "Lutheran eyes". Classes are for those who are inquiring about membership as well as for those who would like to review their faith. Please contact the church office for more information.



REMEMBER OUR CHERISHED CONGREGANTS!...

There are members of our congregation who are unable to attend weekly worship. You can help them to know they are a part of our fellowship by stopping by, sending a card or making a



Ed Shaffer
75 Hawthorne Drive
Cheshire, CT 06410

Edith Wnuck
c/o Highland Health Center
745 Highland Avenue
Cheshire, CT 06410



Marguerite Wilson
C/O Elim Park Baptist Home
150 Cook Hill Road,
Cheshire, CT 06410

John Luchene
c/o Highland Health Center
745 Highland Avenue
Cheshire, CT 06410

SUNDAY SCHOOL FOR JANUARY 2014...

January 5th: Jesus is Baptized

Who am I?" is a question that everyone faces in life, including adults. Adults are continually facing the realities of change in their home life, at work, and simply because they are aging. They realize all too well that who they are today is not who they were just a few years ago. Adults may or may not be aware of how their faith has changed through the years. They may be "stuck" in the faith they learned as children and youth, which no longer fits them. Other adults know who they are in their faith and are constantly growing in it. This lesson looks at how **JESUS IS GOD'S SON**. Adults will be asked who they are, and whose they are.

Bible Point: Jesus is God's son.

Key Verse: John 1:1

January 12: Peter and Andrew Meet Jesus

Many people believe that becoming a Christian means believing a set of truths, attending church, or caring about and serving others. All these things are good, but they aren't the core of what it means to follow Jesus Christ. To be a follower of Jesus Christ is to become a new person. To become a new person in Jesus Christ means to engage in a growing friendship with him.

JESUS IS OUR FRIEND. The friendship changes how we see ourselves and the world around us; it changes what matters most in our lives; it changes how we make decisions; it changes us at the very core of our being. And the changes continue to occur as we learn to listen to and obey our friend.

Bible Point: Jesus is our friend.

Key Verse: John 1:12

January 19: News About Jesus Spreads

Every Christian has a unique relationship with Jesus. We each follow him with different needs and desires. Some find Jesus to be their shepherd. Those who are weary find Jesus to be their rest. Those who need healing find Jesus to be their great physician. All of us come to Jesus with needs. Throughout the Gospels, Jesus met people at the point of their deepest need and ministered to them as individuals. Having needs is part of being human, and those needs are best met in a relationship with Christ. Pay attention to the needs of the adults you lead, and help them see how following Jesus can help them.

Bible Point: Jesus wants everyone to follow him.

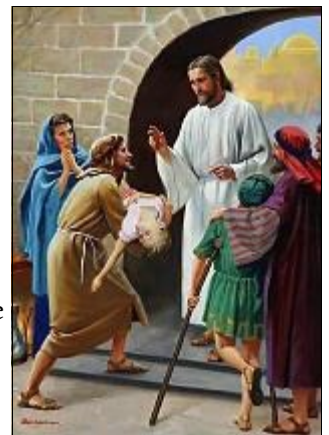
Key Verse: Matthew 11:28

January 26: Jesus Gives the Beatitudes

The human mind is amazing. It can come up with ideas for children's books, strategies for a professional ballgame, words for a key boardroom report, and ideas for a quiet candlelight dinner with a spouse. The mind can also come up with ways to get even with someone, can become consumed by thoughts of bitterness, and can focus on the negative. And the mind can frequently jump back and forth between extremes. Today's lesson is important because the way we think will eventually come out through our choices. Help adults learn that **GOD BLESSES US WHEN WE CHOOSE HIS WAYS**.

Bible Point: God blesses us when we choose His ways.

Key Verse: Philippians 4:8



CLC CALENDARS FOR 2014...

2014 Calendars are here. The calendars are a gift to our congregation compliments of the Al-derson/Slater Funeral Home. You are welcome to pick up a copy from our hallway counter or narthex table.



Bible Studies at CLC

SUNDAY MORNING BIBLE STUDY...



Sunday morning Bible Study will continue in the Library/Conference room at 9:10 am. There are studies of various types which last several weeks each. Join the group for these enlightening lessons.

TUESDAY EVENING BIBLE STUDY RESUMES...

We look forward to having you join us in our study of God's word and topics concerning our faith.

If you have not been to a Tuesday Evening Bible Study before and you have time, please stop by. Its al lot of fun and we have some great conversations. See you Tuesday nights at 7 PM.



CALLING ALL MEN...

Have you been searching for an opportunity to deepen your faith in God and strengthen your relationship with fellow Christians? Join us for an hour of Bible study, fellowship and prayer once a



BIBLE SCHOLARS...

Our CLC Bible Scholars (so-called!) continue to meet every Thursday (except the 3rd Thursday) from 8:30AM to 9:30AM here in our CLC church library.

All are welcome!



CLC LOOKING FOR VOLUNTEER WITH A SENSE OF HISTORY...

We need someone to keep a record of the events that take place in our church. We need someone who would be the *Church Archivist*. Could that person be you? The answer to that question is yes it could. What is involved? How much time will it take? That truly depends upon the individual. But the church needs someone (or small group of people) to keep telling the church's story through words and pictures, articles and other items of importance. So, please give this offer some serious thought and contact the church office if you feel even an inkling of interest. Thanks!

WEATHER AND WORSHIP...

Who knows what kind of winter we will have this year! To find out when worship services have been cancelled due to weather conditions, check TV channels, WTNH channel 8 or MyTV 9, WFSB channel 3 and on the radio, WTIC 1080 AM. All these stations have websites that list weather closings too! A mass e-mail will also be sent. If you would like to be included on our mass e-mail please let the church office know.

Stay warm!



SUNDAY WORSHIP ASSISTANCE FOR THE HEARING IMPAIRED ...

A hearing assistance system (Williams Sound Corporation) and four receivers have been donated to CLC. A receiver (hearing aid) may be obtained from any usher. Please feel free to ask for one and make sure you return to an usher at the end of the service so it can be returned to its proper storage place for use at another time.



TEACHERS NEEDED!...

In order for our CLC Sunday school to continue to operate in an effective manner, we are always looking for folks to step up and do their part. We **team-teach** at CLC which means that each person is only obligated to prepare **13 lessons** during the school year. Schedules are flexible among the members of each team. We have thorough teacher guides that take you through each lesson step-by-step. It is not necessary to have a child currently in Sunday school as demonstrated by several of our current teachers.

There are many blessings attached to being an active part of the Sunday school. You become a good Christian role-model to your children. You get to know the young people at CLC much better. And finally, it can be spiritually enriching for you personally as you revisit many of the Bible stories of your own youth.

HELP! Please prayerfully consider volunteering some of your time for this important mission of Cheshire Lutheran Church. Talk to Andy Schaefer (dce@cheshirelutheran.org) or Carlene Myers (CarlyBaby724@aol.com) if you would like to volunteer or if you'd like to learn more about the program. We could also use folks that are willing to be on a Substitute List.



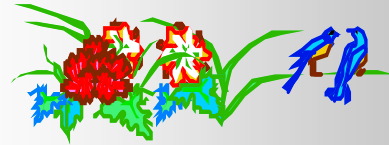
HAPPY ANNIVERSARY

January 2014

17th

John & Lynn Balash

39 Years



COUNCIL AND VOTERS MEETING REMINDER...

No Voters meeting in January!!!

The; Annual corporate meeting will be held on January 12th after BOTH services!



ROBERTA YOUNG GOVERNOR

- 1st Catherine Donewald
- Eric Spose
- Todd Plantier
- 4th Emily Smith
- 5th Allen Blem
- Robin Harding
- Michael Carrington
- 6th Jonathan Martinek
- 9th Olivia Manke
- 10th Kristen Slocum
- Craig Wilson
- 12th Lorna Mulvaney
- 13th Jean O'Hara
- Carolyn Schmollinger
- 14th Barbara Manthey
- 15th Christine Govertsen
- 19th Elena Manke
- 23rd Margie Mertz
- 24th Ned McBain
- 25th Carol Santoro
- 26th John Shepard
- 27th Don Dobbs
- 28th Eleanor Kenney
- 29th Mikayla Pryde
- 30th Todd Peters
- 31st Linda Grenus
- Emese Gall



Cheshire Lutheran Church
660 West Main St
Cheshire CT 06410